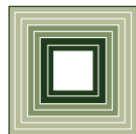


Joint Appropriations Subcommittee on  
Justice and Public Safety

## **Department of Public Safety**

# **State Highway Patrol State Bureau of Investigation**

March 19, 2013



**FISCAL RESEARCH DIVISION**  
A Staff Agency of the North Carolina General Assembly

# JPS - DPS

## Department of Public Safety (DPS)

**Houses the former Departments of Crime Control and Public Safety, Juvenile Justice and Delinquency Prevention, and Correction**

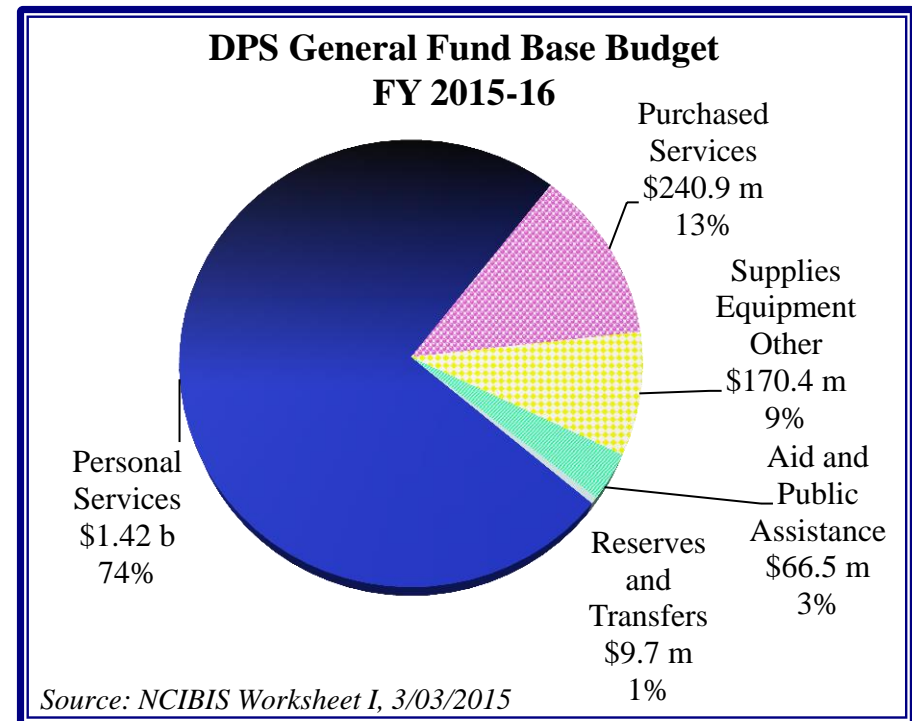
*Frank Perry, Secretary*

Includes:

- Prisons
- Community Corrections
- Juvenile Justice
- Highway Patrol
- State Capitol Police
- State Bureau of Investigation
- Alcohol Law Enforcement
- Emergency Management
- National Guard
- Victims Services

**Total General Fund Budget: \$1.9 billion**

**Total FTE Employees: 24,676.45**



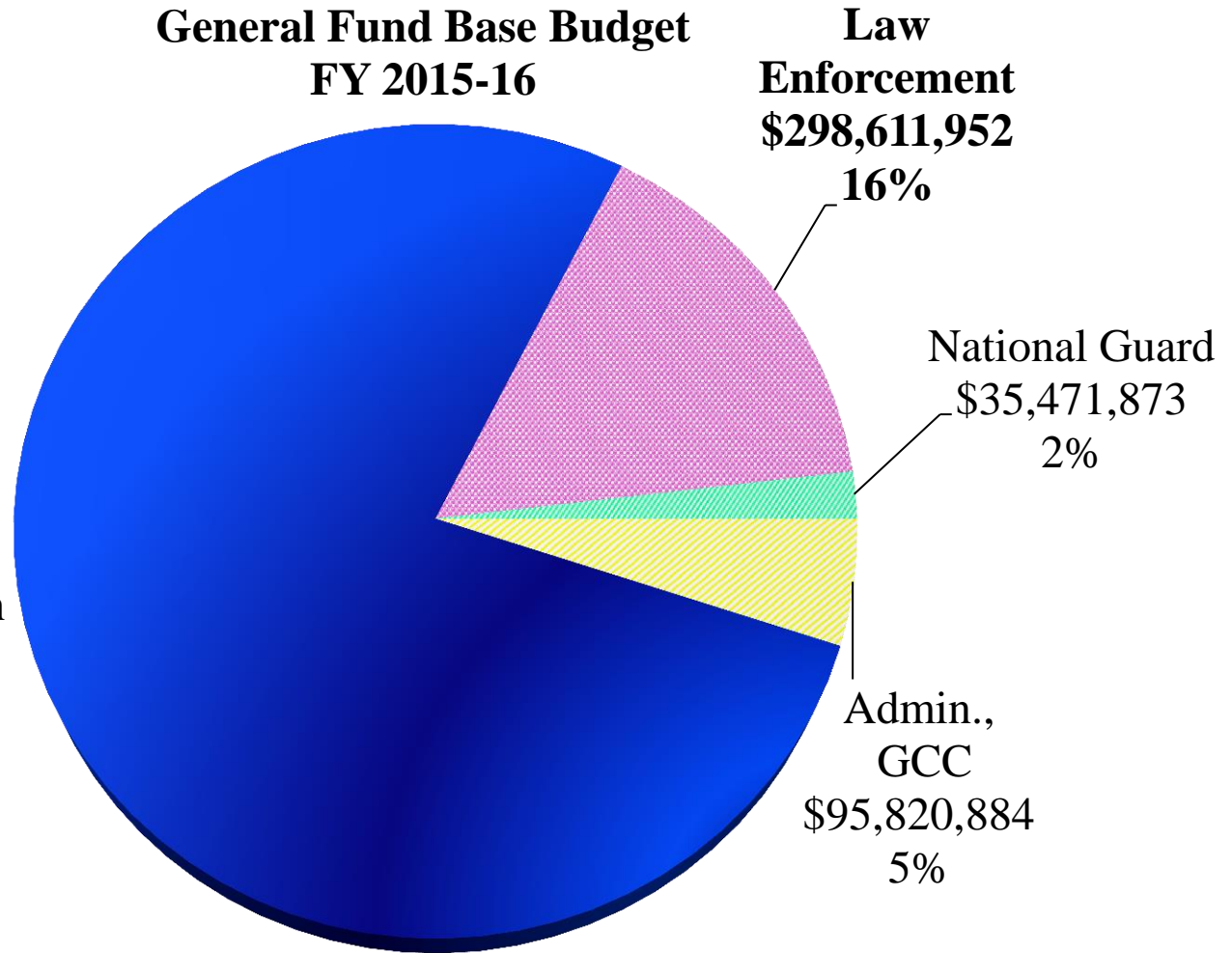
# FY 2015-16 Base Budget

## General Fund Base Budget FY 2015-16

Total Budget:  
**\$1.9 billion**

Total Full-Time  
Equivalent (FTE)  
Employees:  
**24,676.45**

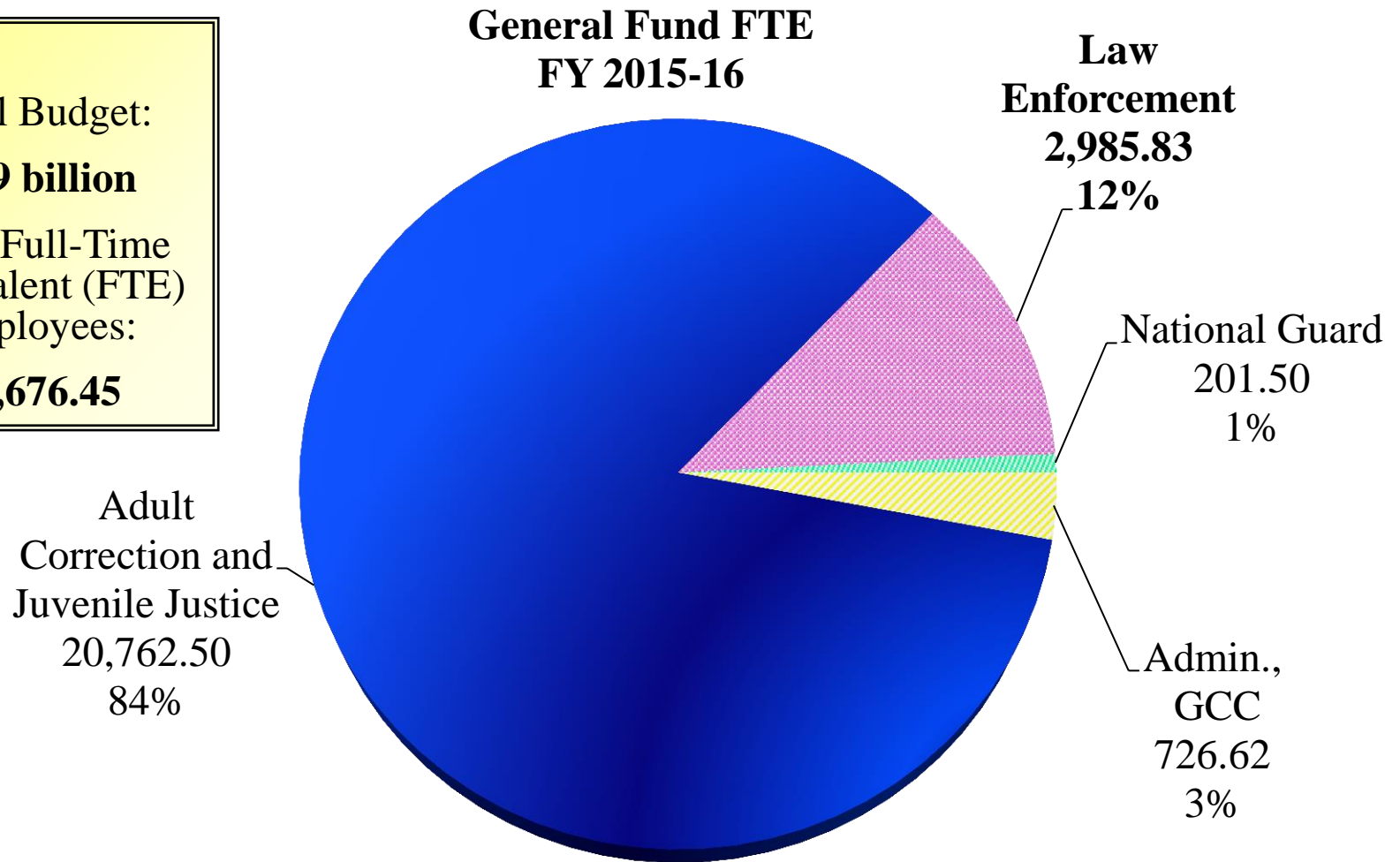
Adult Correction  
and Juvenile  
Justice  
\$1,479,268,808  
77%



Source: NCIBIS, Worksheet I, 03/03/2015

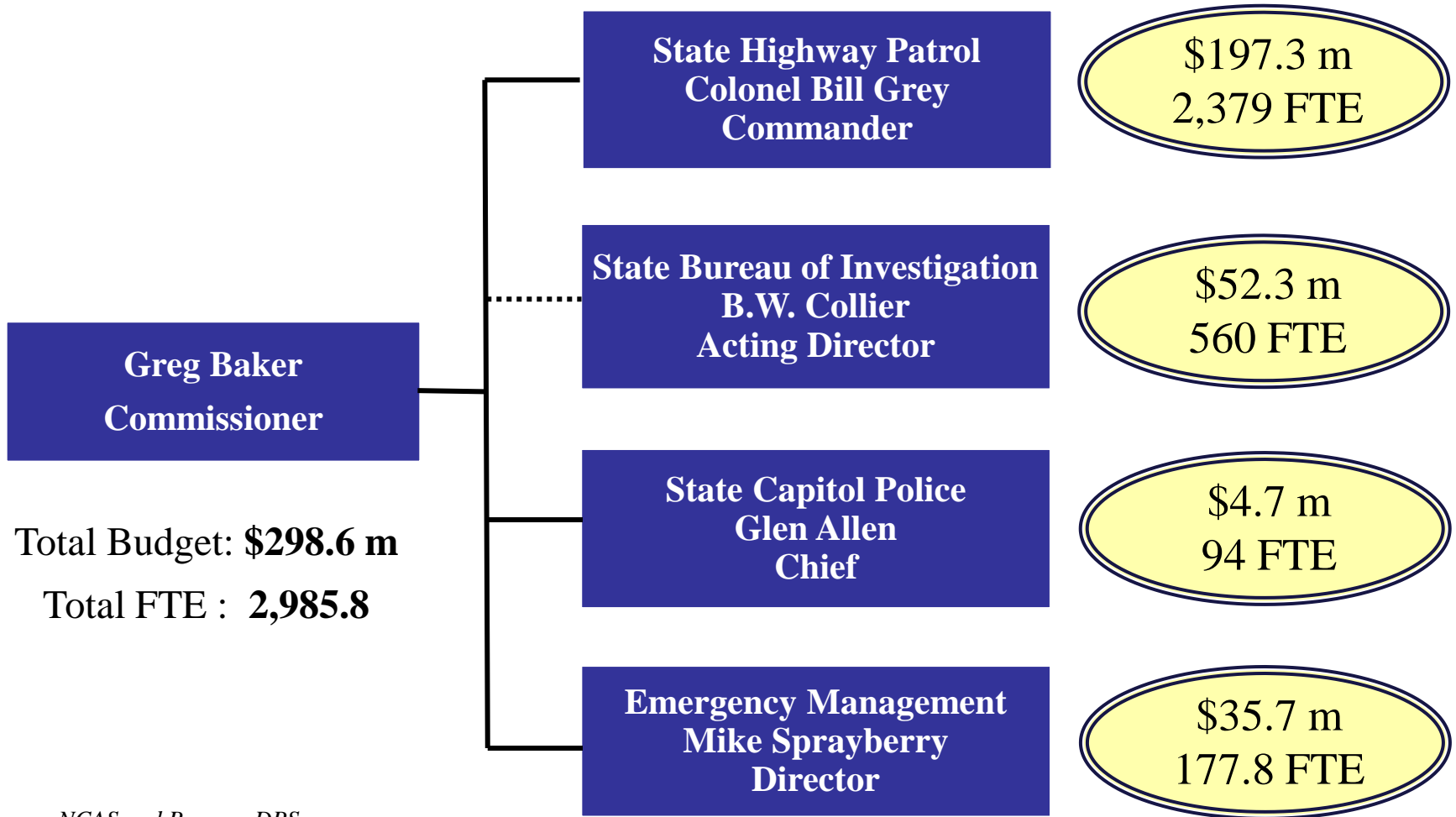
# FY 2015-16 Base Budget

Total Budget:  
**\$1.9 billion**  
Total Full-Time  
Equivalent (FTE)  
Employees:  
**24,676.45**



Source: NCIBIS, Worksheet I, 03/03/2015

# Division of Law Enforcement



Source: NCAS and Beacon, DPS

# NC State Highway Patrol

---

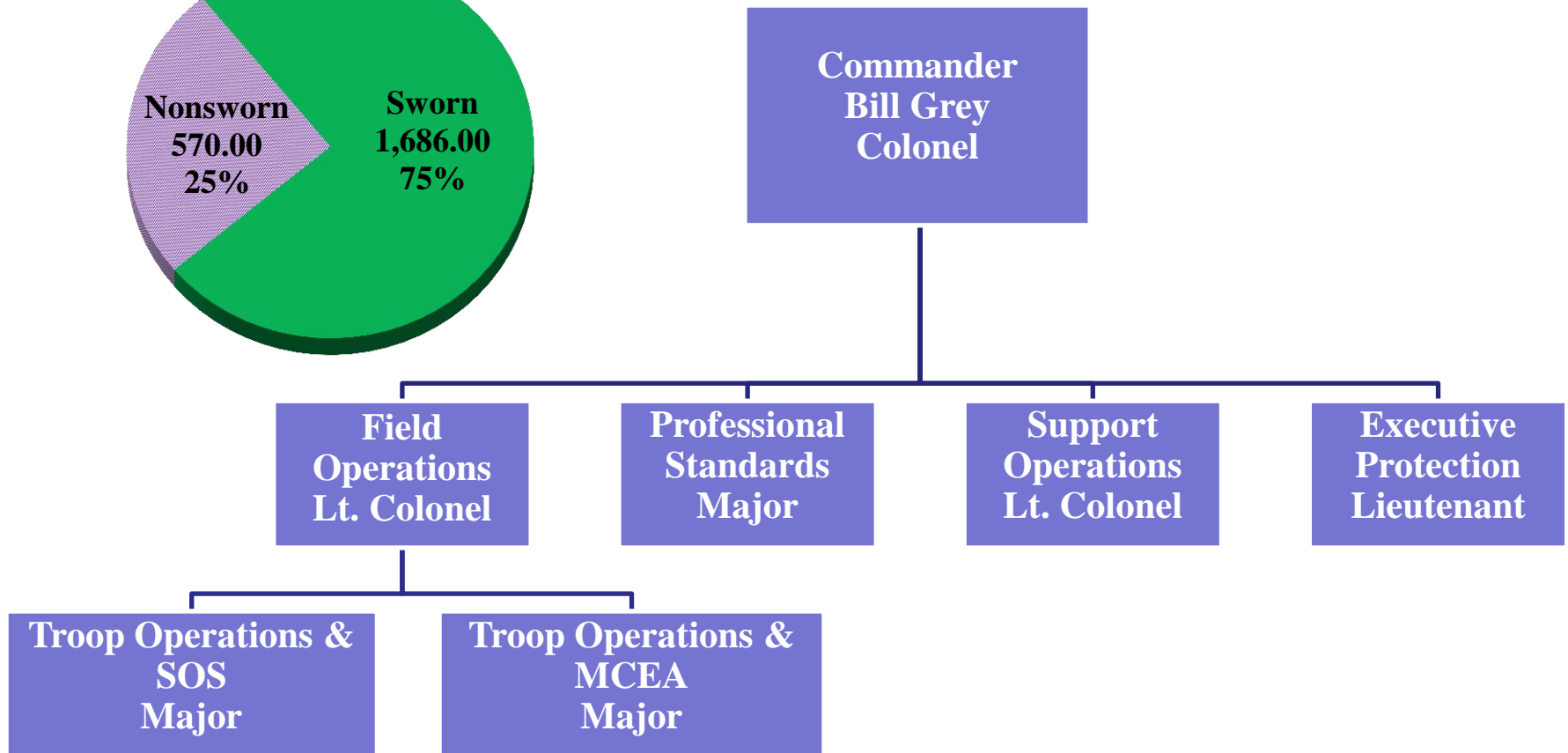
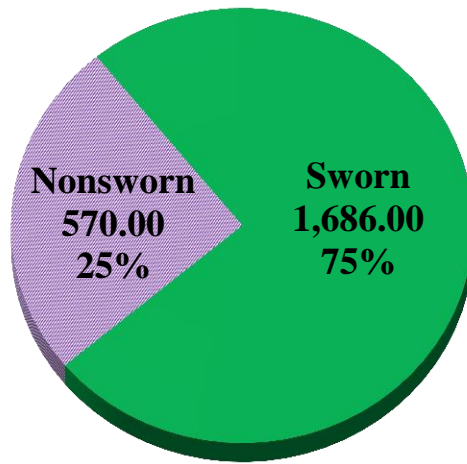
**Established in 1929**

**G.S. 20, Article 4**

Mission: To ensure safe, efficient transportation on our streets and highways, reduce crime, protect against terrorism, and respond to natural and manmade disasters.



# NC State Highway Patrol





# NC State Highway Patrol

---

## Field Operations

Eight Troops divided into five to nine districts each

- Enforce traffic laws
- Investigate accidents and assist motorists
- Provide traffic safety information
- Commercial Vehicle Enforcement

## In 2014, Troopers:

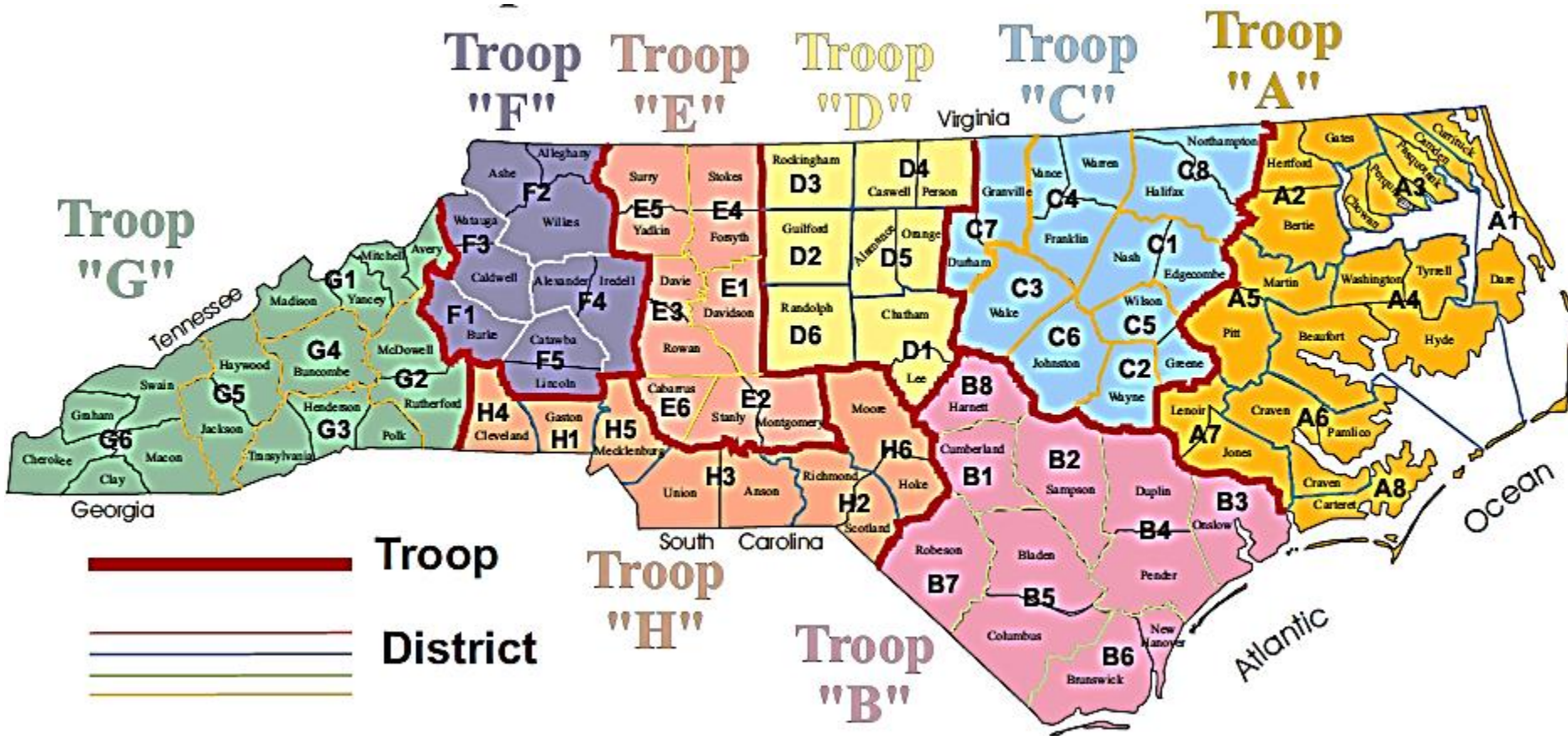
- Issued 345,173 speeding tickets
- Arrested 20,190 DWI offenders
- Investigated 105,630 accidents



*Source: NC DPS*



# NC State Highway Patrol



# NC State Highway Patrol

---

## Professional Standards

- Internal Affairs
- Inspections
- Performance, Promotion
- Research and Planning



*Source: NC DPS*

# NC State Highway Patrol

---

## Highway Patrol Training Academy

Located at the Governor Morehead School for the Blind since 1976

- 9 buildings
- 317 acres
- Driving track
- Heliport

## Basic School

- 66 cadets, plus alternates
- 29 weeks, 1,305 hours
- \$2 million per class
- New trooper equip. \$48,382

## In-service Training

## Certification and Specialized Training



*Source: NC DPS*



# NC State Highway Patrol

---

## **Support Services - Logistics**

- Mechanics and Auto Body Shop
- Radio Engineers
- Motor Fleet
- Equipment, supplies, uniforms

## **Support Services – Technical Services Unit**

- All SHP computer systems
- Laptop and desktop support
- VIPER

## **Support Services – Personnel and Benefits**

- Workers Comp
- Retirement
- Process personnel actions



*Source: NC DPS*

# NC State Highway Patrol

---

## VIPER

Voice Interoperability Plan for Emergency Responders

- Allows inter-agency communication during emergencies
- State/local Partnership
  - State pays for towers
  - Locals pay for their radios
- 241 Tower sites (207 constructed)
- 71,644 users from 277 agencies
- Cost to date - \$174.5 million (\$110.1 federal; \$64.5 State)



# NC State Highway Patrol

---

## Vehicles

Enforcement vehicles: 1,622

Enforcement spares: 126

Training vehicles: 87

192 support vehicles: 192

**Total Fleet: 2,027**

Charger Cost: \$26,199

Taxes and Tags: \$786

Upfit\* Costs: \$1,301

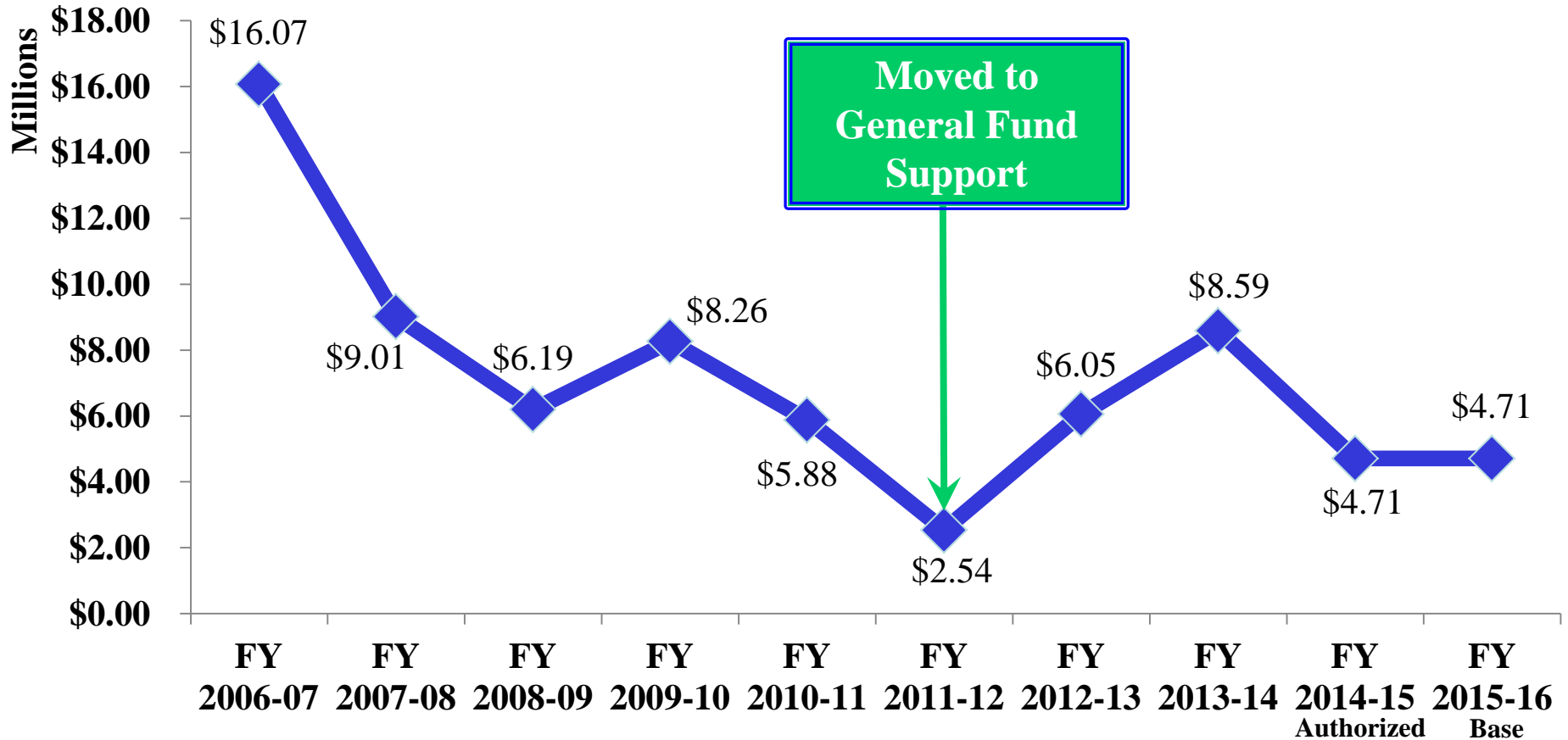
**Total Cost: \$28,286**



**\*Upfit costs do not include mobile computers or in-car cameras**

# NC State Highway Patrol

## State Highway Patrol Vehicle Expenditures Since FY 2006-07



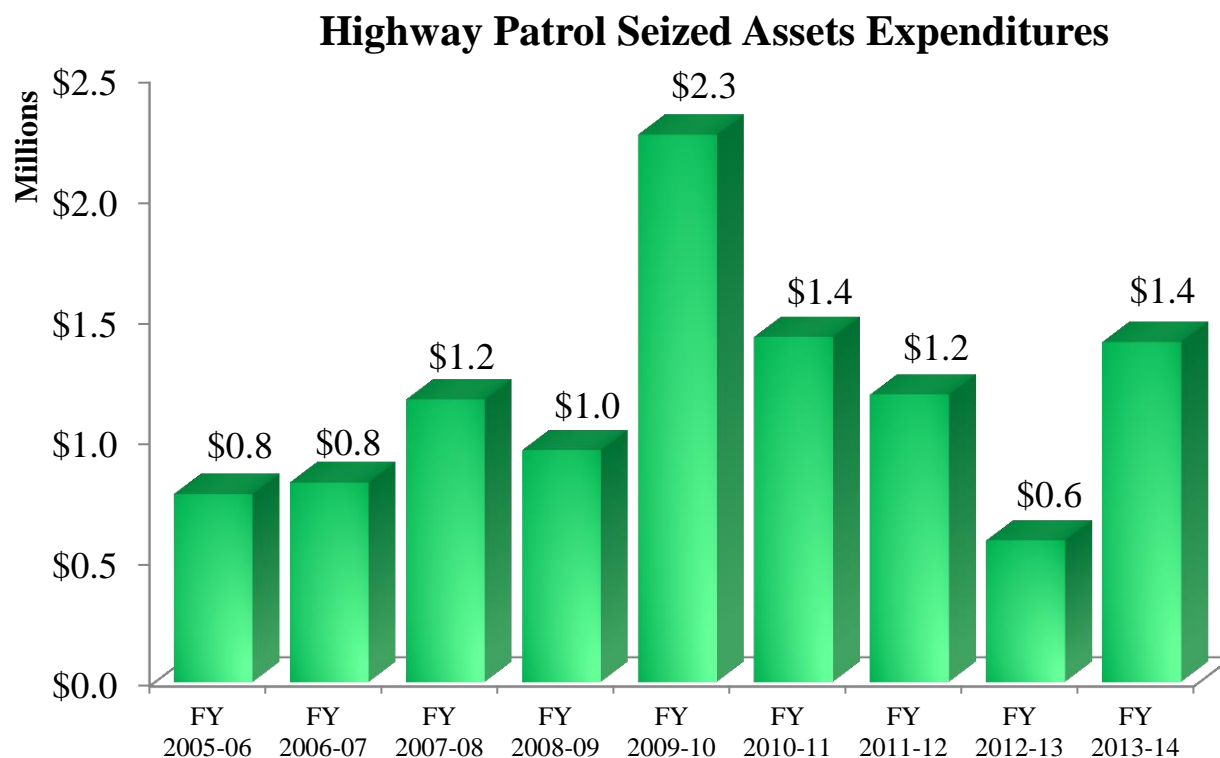
Source: DPS SHP, February 2014; NCIBIS Worksheet I, 03/03/2015



# NC State Highway Patrol

## Seized Assets

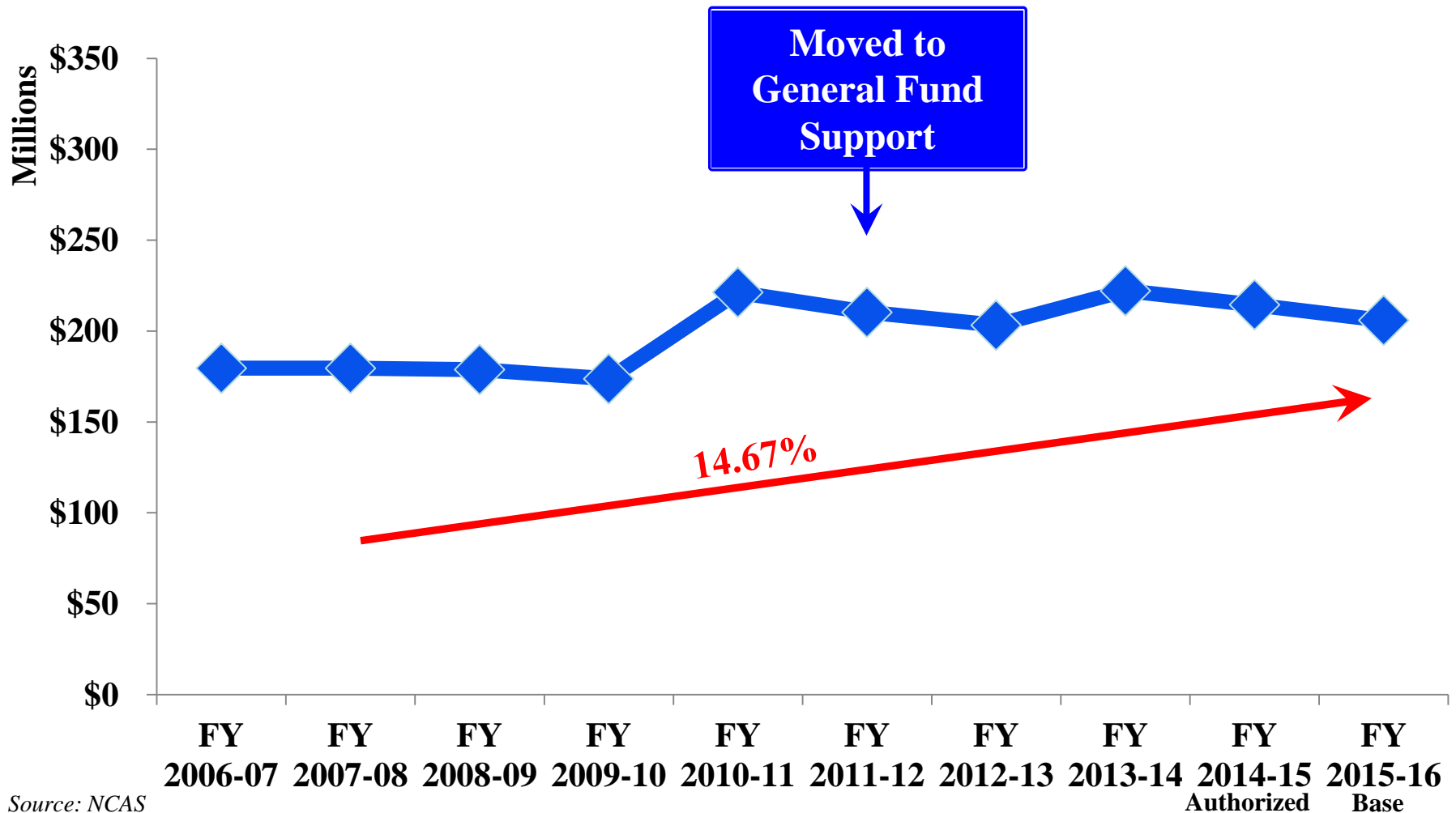
- Weapons and armor
- Phones and radios
- Training
- Video Cameras



Source: NCAS

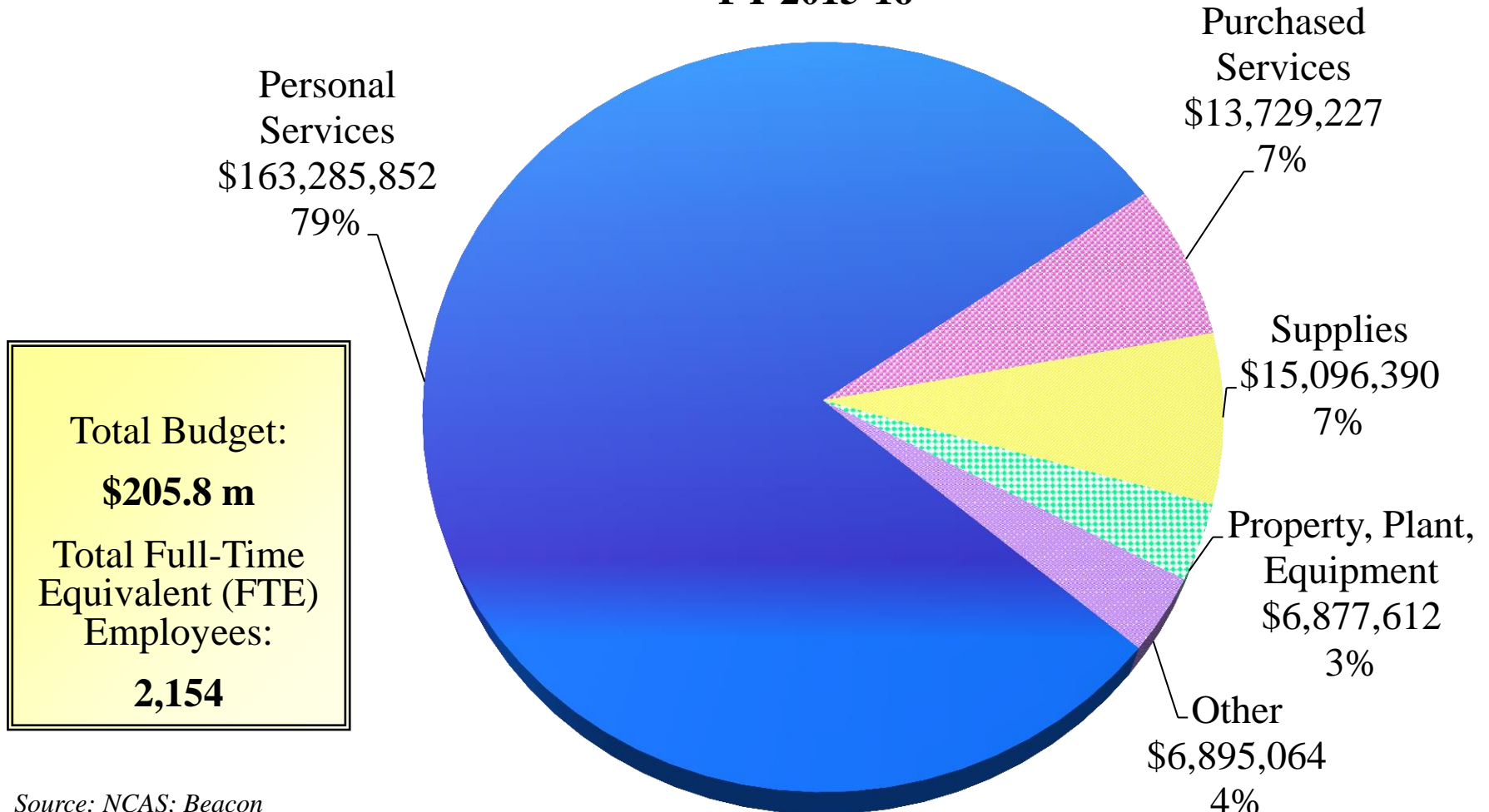
# NC State Highway Patrol

## Actual Expenditures Since FY 2006-07



# NC State Highway Patrol

## General Fund Base Budget FY 2015-16



Source: NCAS; Beacon

# SHP: Recent Budget Actions

---

## **2013 Budget (S.L. 2013-360)**

Department-wide Consolidation Efficiencies	(\$5,000,000) R
Budget Vacant Trooper Positions	\$2,505,713 R
SHP Fuel	\$3,677,292 R
SHP Aircards	\$626,000 R
SHP Mobile Computers	\$1,050,640 NR
SHP Communication Center Consolidation	(\$1,662,707) R
SHP Aviation	(\$901,900) R
SHP Consolidation of Technology Services Functions	(\$506,517) R
SHP Administration Reduction	(\$700,000) R
SHP Accreditation Unit Elimination	(\$402,978) R
SHP Support Positions	(\$772,853) R
SHP Traffic Safety Information Officers	(\$527,288) R
VIPER Operations and Maintenance	\$2,825,471 R

# SHP: Recent Budget Actions

---

## **2013 Budget (S.L. 2013-360) (continued)**

SHP VIPER Technology Upgrade	\$25,000,000 NR
VIPER Tower Construction (2 <sup>nd</sup> Year)	\$7,000,000 R
Continued the Step Increase Freeze	
Total net FTE eliminated: 54.0	

## **2014 Budget (S.L. 2014-100)**

DPS Department-wide Management Flexibility Reserve	(\$6,319,863) NR
\$1,000 salary increase for all permanent FTE	\$30,219,820 R
Experience-based Step-Increase	\$1,834,633 R
SHP Vacant Trooper Positions	(\$1,781,325) R
SHP Uniforms	\$863,384 R
Troopers' Association Caisson Unit	\$100,000 NR
Total net FTE eliminated: 35.0	

**Section 16B.5** required DPS to use \$2.9 million of funds available to purchase VIPER radios for the Highway Patrol.

# Questions

---



# State Bureau of Investigation





# SBI Transfer

---

**Consolidate major State law enforcement divisions under one agency:**

- Shared resources
- Purchasing efficiencies
- Coordination and cooperation



# SBI Transfer

---

## Changes to SBI Director

### Previous Law

- Appointed by the Attorney General (AG)
- Served at pleasure of the AG
- No set terms
- Conducted most investigations “upon the request of” or “under the direction of” the Governor

### S.L. 2014-100, Sec. 17.1

- Nominated by the Governor and confirmed by the NCGA
- Can only be removed for cause by the Governor
- Eight-year terms
- Conducts most investigations “at the request of” or “under the direction of” the Governor

# SBI Transfer

---

## Savings and Efficiencies

### Information Technology

- Separated Division of Criminal Information from SBI and put it directly under Commissioner of Law Enforcement

### District Offices

- Required consolidation of Alcohol Law Enforcement and SBI district offices by October 1 (except Asheville, which is required by July 1, 2015)

### Bulk and Coordinated Purchasing

- Type II transfer of SBI left the budget under the control of the Secretary of Public Safety, allowing for better oversight and coordination of expenditures for supplies and equipment

**Total FY 2014-15 Savings: \$1.2 million**

# SBI Transfer

## Jurisdictional Boundaries



### G.S. 20-49 and 20-49.1

- Motor Vehicle Laws
- Crimes in their presence
- When called in by other law enforcement agencies



### G.S. 143B-900

- Same as a Raleigh police officer or Wake County deputy sheriff on property owned, leased, or maintained by the State in the city of Raleigh or Wake County



### G.S. 143B-919

- Hazardous waste dumping
- Communicating threats
- Arson (G.S. 58-79-5)
- Gambling and Lottery
- Drugs (G.S. 90-113.5)
- Lynchings
- Computer crimes
- Child sex abuse in daycares
- Riots
- Explosives
- Local investigations



### G.S. 18B-500

- Statewide jurisdiction over any criminal offense
- Primary responsibility is ABC and Lottery

# SBI Transfer

---

## Other Changes

### **Moved ALE under the SBI**

- G.S. 143B-928: *...the Alcohol Law Enforcement branch is a separate and discrete branch of the State Bureau of Investigation.*

### **Clarified the ALE mission**

- G.S. 18B-500: *the primary responsibility of an agent shall be enforcement of the ABC and lottery laws.*

### **SBI personnel are the sole responsibility of the SBI Director**

- G.S. 143B-927: *The Director shall be responsible for making all hiring and personnel decisions of the Bureau.*

# SBI Transfer

---

## Progress Reports

- Interim – January 1, 2015
- Interim – April 1, 2015
- Final – October 1, 2015



# State Bureau of Investigation

---

*B.W. Collier, Acting Director*

## **Original Jurisdiction (G.S. 143B-919):**

- Election fraud
- Lynchings
- Computer crimes against children
- Child sex abuse in daycares
- Explosives
- Riots
- Hazardous waste dumping
- Communicating threats
- Arson (G.S. 58-79-5)
- Gambling and Lottery
- Drugs (G.S. 90-113.5)

## **Assistance to law enforcement at their request**

## **SBI Divisions:**

- Administrative Services
- Field Operations
- Special Operations
- Alcohol Law Enforcement

Total Budget:

**\$52.9 m**

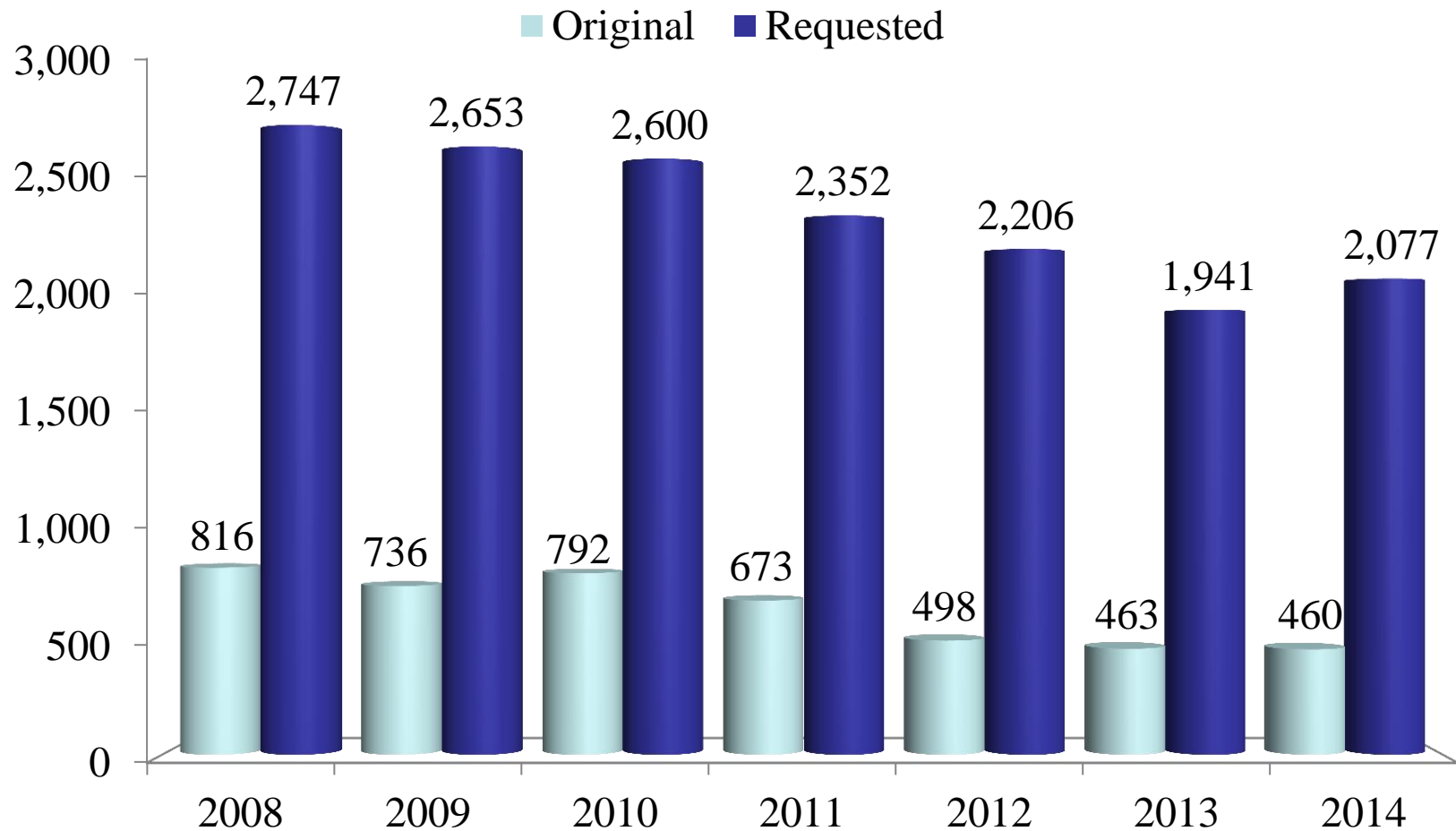
Total FTE:

**566.0**



# State Bureau of Investigation

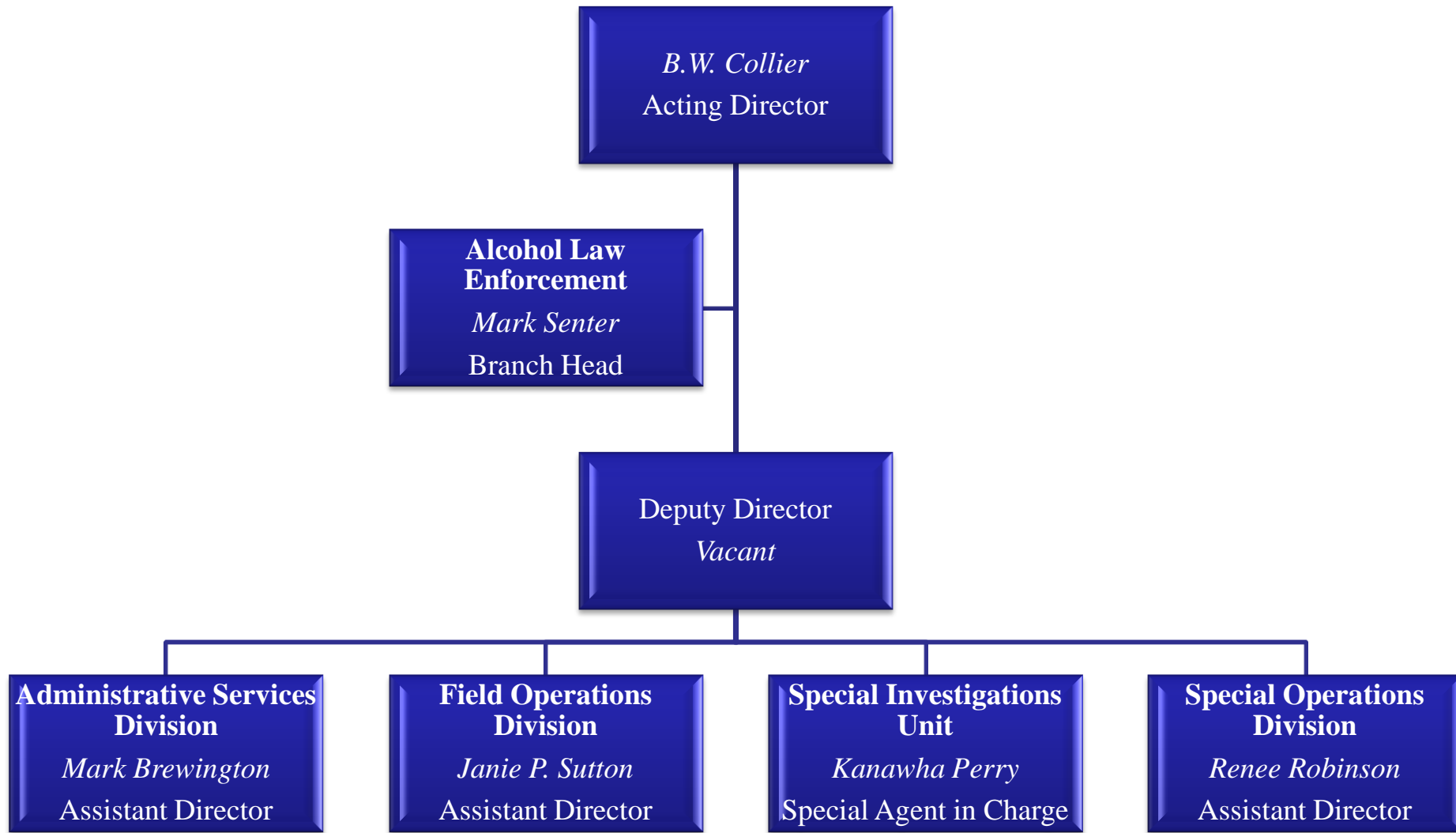
## SBI Origin of Investigation



Source: SBI

# State Bureau of Investigation

---



# State Bureau of Investigation

---

## Administrative Services Division

- Training and investigative support
- Accreditation and career development
- Business and logistics
- Case Records Management

**49 FTE**



*Source: FTE – Beacon BO149, 03/08/2015*

# State Bureau of Investigation

---

## Recruitment and Training (11 FTE)

- Minimum Bachelor's degree
- Agents must have or obtain law enforcement certification
- 75% of new agent hires already have Basic Law Enforcement Training (BLET)
- All new agents go to SBI Academy
  - 18 weeks/ 720 hours
  - Salemburg Training Academy
- One year as agent trainee
- In-service training as required by CJTS and SBI



# State Bureau of Investigation

---

## Alcohol Law Enforcement

118 FTE

Created 1977

G.S. 18B-500

*(c) ...The primary responsibility of an agent shall be enforcement of the ABC laws and lottery laws.*

### Statewide jurisdiction:

- ABC laws
- Lottery laws
- Bingo
- Gambling
- Boxing



# State Bureau of Investigation

---

## Field Operations Division

**179 FTE**

### Eight District Offices:

- Each has Special Agent in Charge (SAC), Assistant SAC, special agents, an administrative secretary and an office assistant
- Investigate original jurisdiction cases in their district
- Provide assistance to local law enforcement

### Special Investigation Units:

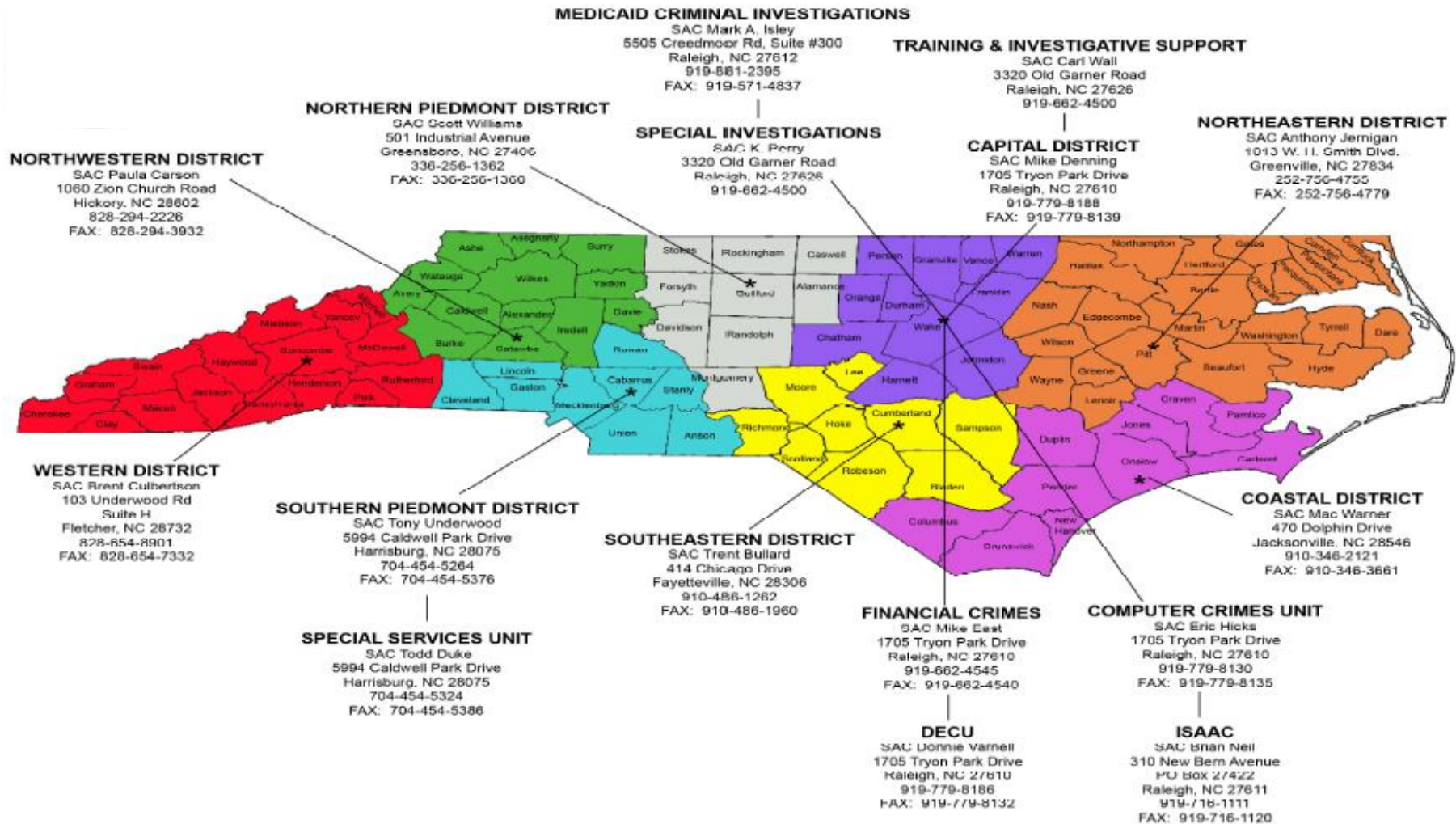
- Fire/Arson
- Crime Scene Search
- Polygraph



*Source: FTE – Beacon BO149, 03/08/2015*



# State Bureau of Investigation



Revised: January 12, 2015



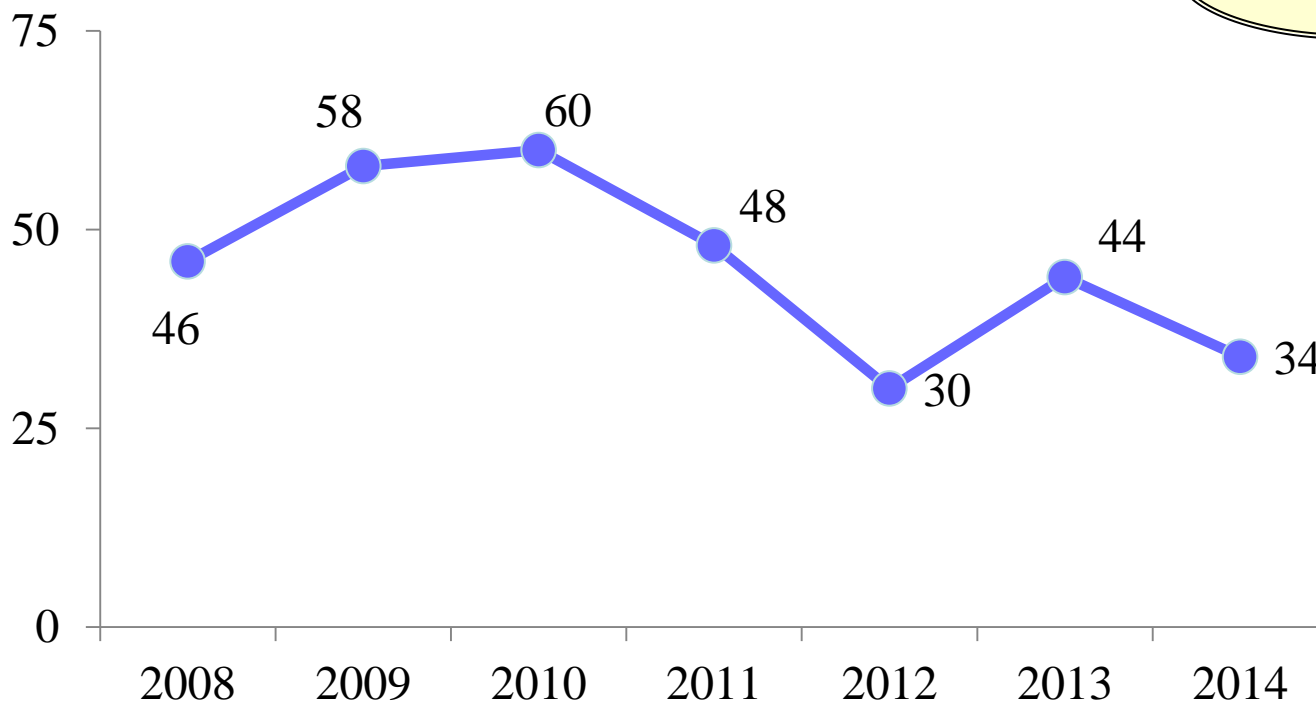
# State Bureau of Investigation

## Special Investigations Unit

Investigates public corruption and government misconduct and internal affairs for the SBI.

### Public Corruption Investigations

5 FTE



Source: FTE – Beacon BO149, 03/08/2015

# State Bureau of Investigation

---

## Special Operations Division

### Air Wing Unit (4 FTE)

Aerial surveillance, marijuana eradication, investigative photography and reconnaissance, prisoner transport

### Computer Crimes Investigations (16 FTE)

Statewide coordination and investigation of computer and internet crimes primarily involving children

### Diversion and Environmental Crimes Unit (16 FTE)

Diversion of controlled drugs by health care professionals and environmental crimes



*Source: FTE – Beacon BO149, 03/08/2015*

# State Bureau of Investigation

---

## Special Operations Division (continued)

### Financial Crimes Unit (14 FTE)

Complex white collar crimes including embezzlement and corporate malfeasance.

### Intelligence and Information (22 FTE)

Includes ISAAC and the Criminal Intelligence Unit.

### Threat Assessment and State Property Theft (2 FTE)

Assesses threats against government officials and investigates reports of theft of State property.



Source: FTE – Beacon BO149, 03/08/2015

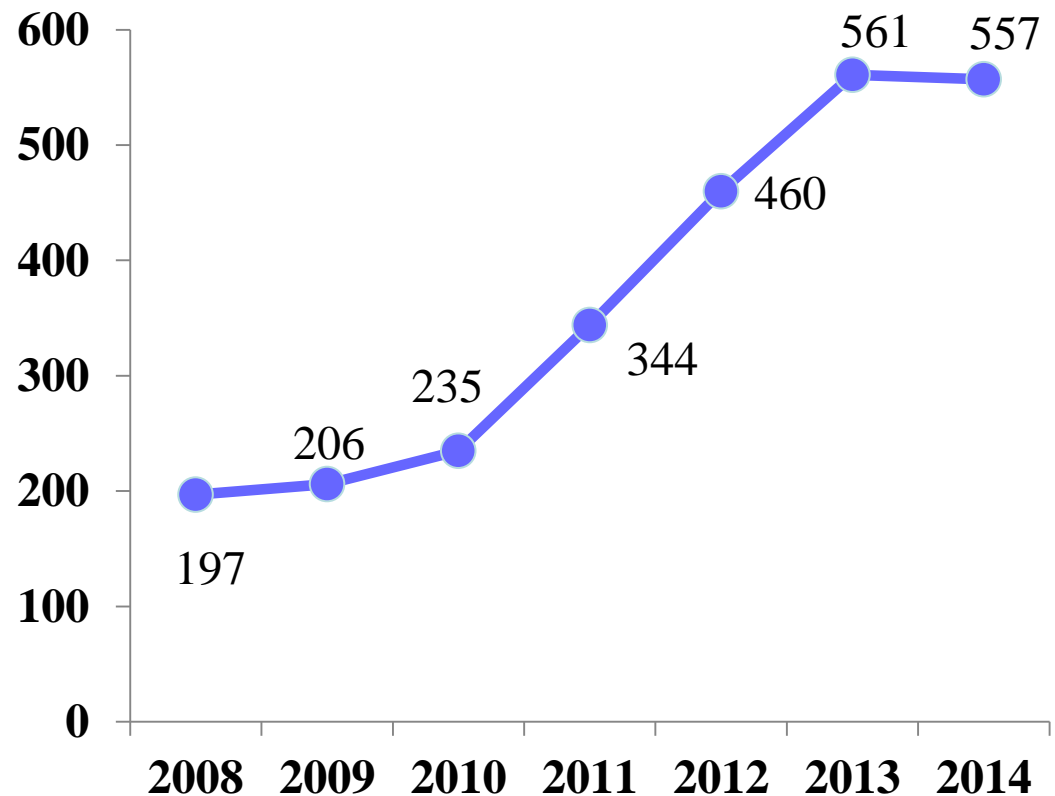
# State Bureau of Investigation

## Special Operations Division (continued)

### Special Services and Intelligence Units (20 FTE)

- Clandestine lab response
- Crises negotiation
- Fugitive arrest and apprehension
- Special Response Team
- Weapons of mass  
destruction/hazardous devices

### Meth Lab Responses



Source: DOJ; FTE from Beacon BO149

# State Bureau of Investigation

## Special Operations Division (continued)

### Criminal Information and Identification (72 FTE)

- Background checks
- Statewide Automated Fingerprint Identification System (SAFIS)
- Criminal Information Network (CIN)
- Sex Offender Registry
- Uniform Crime Reporting Program (UCR)



Source: FTE – Beacon BO149, 03/08/2015

# State Bureau of Investigation

---

## Background Checks

### SBI conducts background checks for:

- Employment
- Licensure
- Adoption
- Concealed weapons
- Law enforcement



### Fees charged to everyone except law enforcement (G.S. 143B-930)

- 104,032 background checks for 5,117 entities in FY 2013-14
- 117,853 background checks for concealed carry permits in FY 2013-14
- Total receipts: \$8.7 million

*Source: SBI*

# State Bureau of Investigation

---

## Criminal Information Network

### **G.S. 143B-902 Powers and duties of DPS with respect to criminal information**

Requires DPS to collect information and share it with law enforcement

### **Criminal Information Network (CIN) (G.S. 143B-905)**

- Central law enforcement hub for 20,000 sworn law enforcement officers statewide
- Access to State and federal crime information
- Operates 24 hours a day, 365 days a year

### **Fees authorized (G.S. 143B-905(d))**

- 905 agencies with 27,689 end users in FY 2013-14
- Monthly fee - \$12 (mobile) or \$25 (desktop) per device
- Generated \$3.1 million in FY 2013-14





# State Bureau of Investigation

---

**Serves over 20,000 sworn law enforcement officers using the following systems:**

- Law Enforcement Message Switch (LEMS)
- Omnixx Force, Trainer, Charts, Alerts, and DMXLive
- Statewide Automatic Fingerprint Identification System (SAFIS)
- Computerized Criminal History (CCH)
- Sex Offender Registry
- Concealed Handgun Permits (CHP)
- EVOLVE
- Expungement
- Recovered Vehicles
- Crime Analysis Management System (CAMS)
- Crime Reporting
- Traffic Stops
- NC-DEx

# State Bureau of Investigation

---

## Seized and Forfeited Assets

**Federal program subject to federal regulations.**

### **Funds can be used for:**

- Investigations
- Training
- Facilities
- Equipment
- Travel
- Other

### **Funds can NOT be used for:**

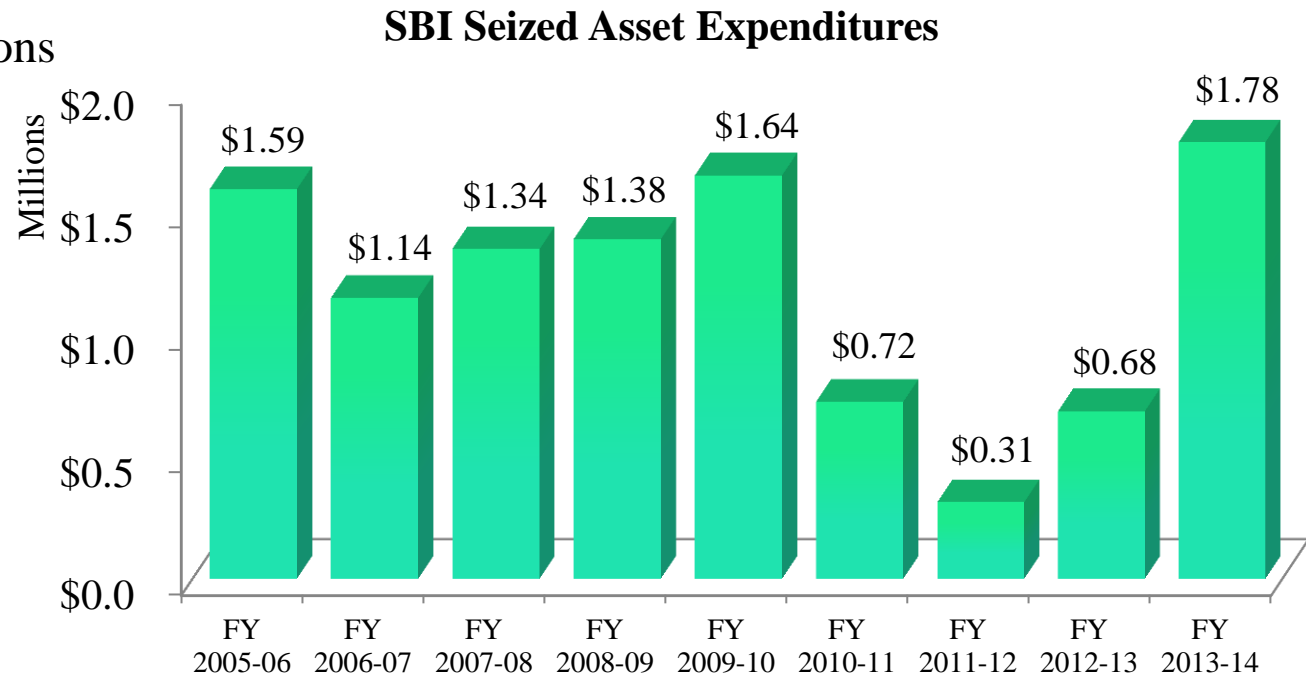
- Salaries
- Scholarships
- Food and beverages
- Hospitality suites
- Illegal activities



# State Bureau of Investigation

## SBI Seized Assets

- Vehicles
- Phones
- Computers and software
- Undercover operations



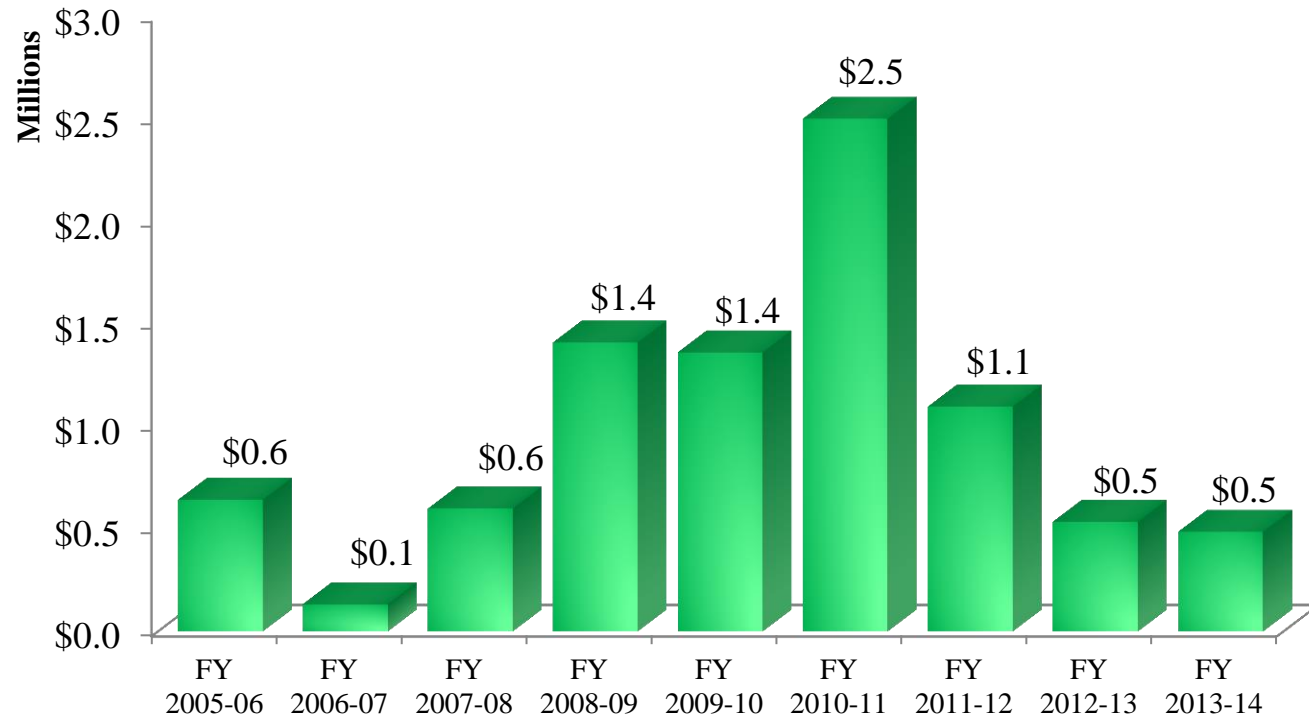
Source: NCAS Budget History

# State Bureau of Investigation

## ALE Seized Assets

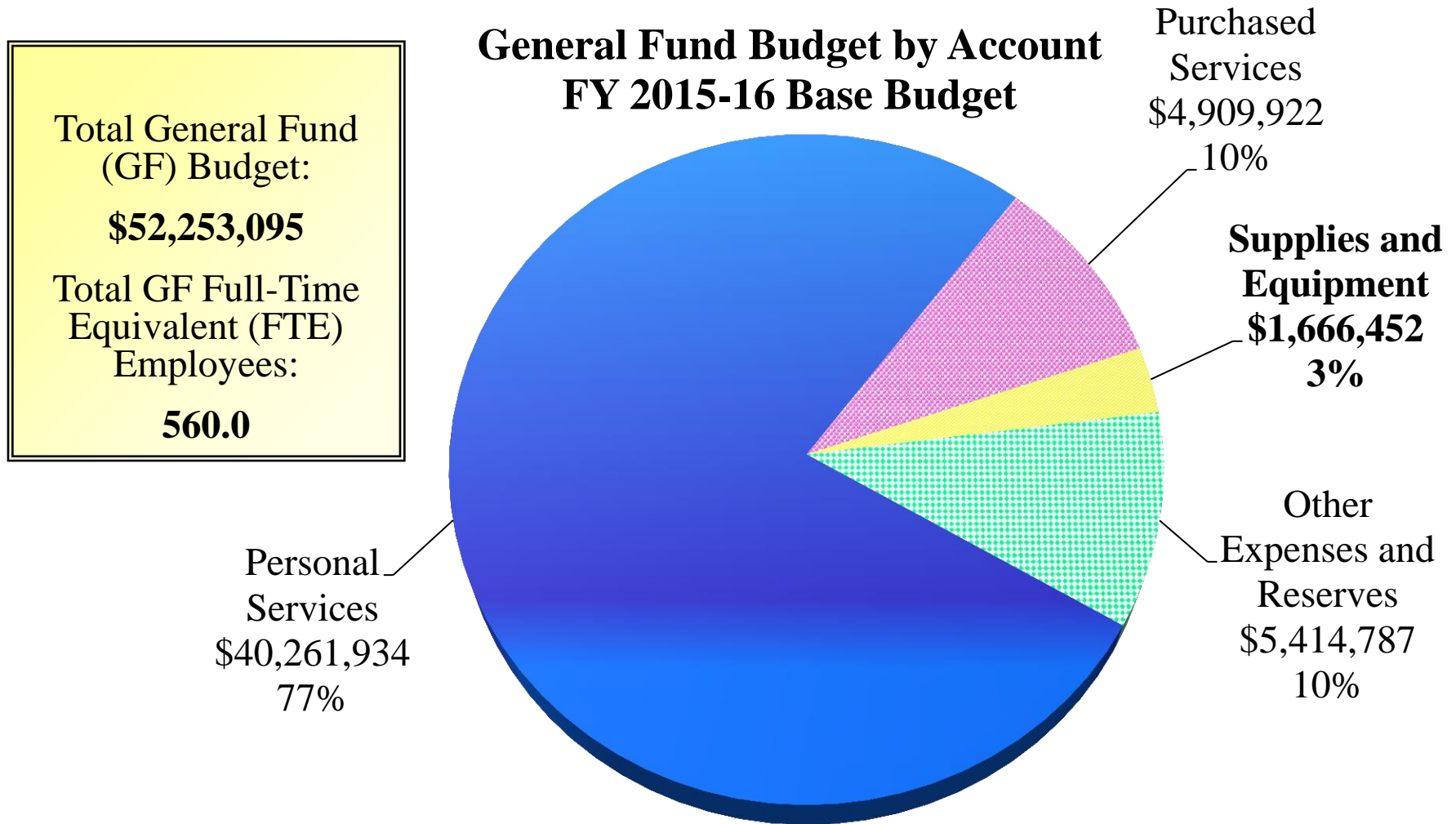
- Weapons and armor
- Ammunition
- Gas
- Vehicles

## ALE Seized Assets Expenditures



Source: NCAS Budget History

# State Bureau of Investigation



Source: NCIBIS, Worksheet I, 03/03/2015

# State Bureau of Investigation

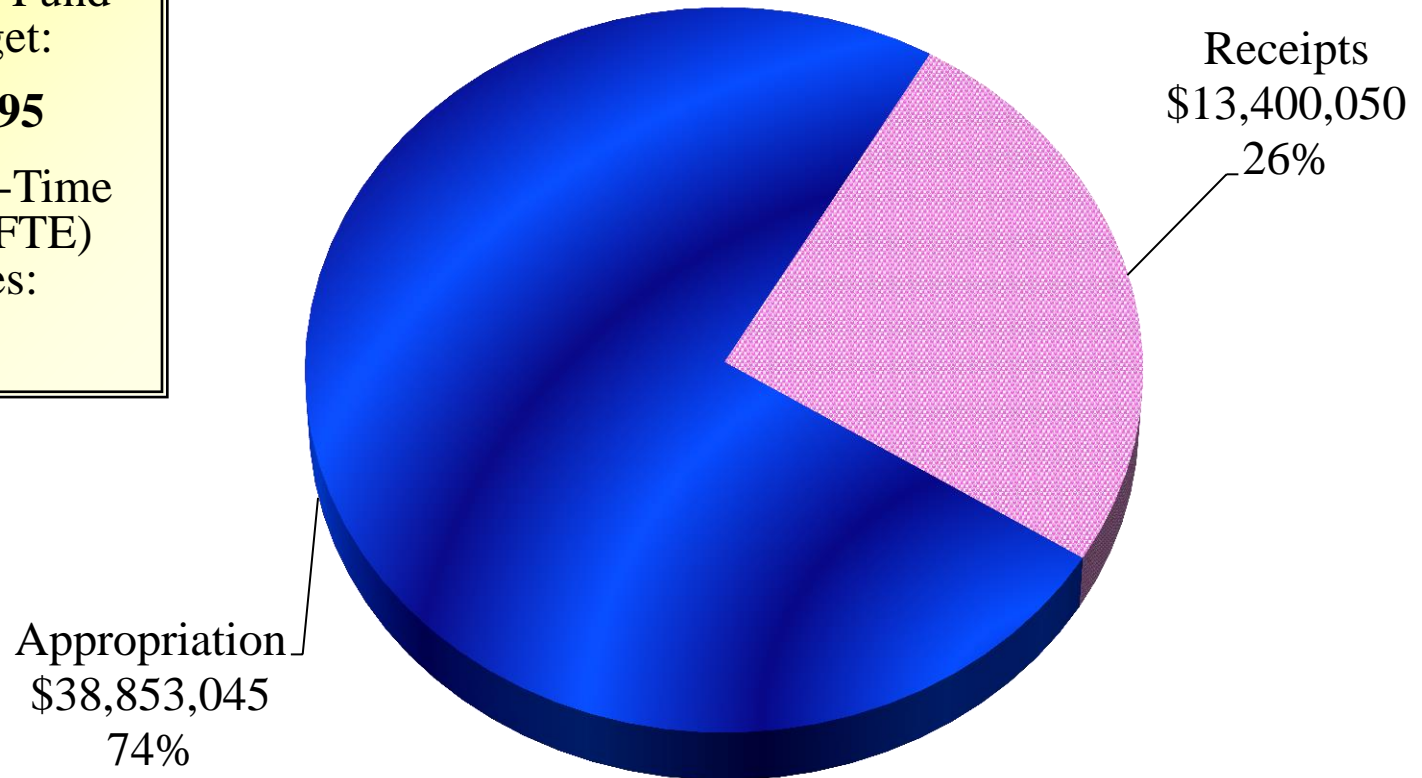
**General Fund Budget by Source  
2015-16 Base Budget**

Total General Fund  
(GF) Budget:

**\$52,253,095**

Total GF Full-Time  
Equivalent (FTE)  
Employees:

**560.0**



Source: NCIBIS, Worksheet I, 03/03/2015

# SBI: Recent Budget Actions

---

## **2013 Budget (S.L. 2013-360)**

DOJ Department-wide Management Flexibility Reserve (\$1,700,000) R

ALE Operating Reduction (\$1,750,000) R

- **Sec. 17.6** moved the State Crime Lab out of the SBI

## **2014 Budget (S.L. 2014-100)**

DPS Department-wide Management Flexibility Reserve (\$6,319,863) NR

\$1,000 salary increase for all permanent FTE \$30,219,820 R

Consolidation Savings Reduction (\$1,000,000) R

ALE/SBI District Office Consolidation (\$231,439) R

Restoration of 13 ALE Positions \$724,454 R

- **Sec. 17.1** moved the SBI to DPS and placed ALE under the Director of the SBI.



# Questions

---

